



# Echo Backup Software

Quick Start Guide

## INTRODUCTION

Whether you're a business professional on the road, a student doing homework at a friend's house, or someone simply using a laptop in a café, it's important to ensure the files on your netbook or notebook are protected. Lexar® Echo portable backup drives provide a convenient way to automatically back up your files on the go.

Thanks to Lexar Echo backup software functionality and its extremely easy-to-use interface, saving and protecting valuable data (documents, presentations, photos, audio, video files, etc.) is no longer a tedious task. Restoring data is just a click away.

### Lexar Echo Backup Software Key Features

#### Incremental Backup

Unlike traditional backup software, Lexar Echo backup software provides you with an option to store only new and modified files, thus reducing system overhead.

#### Versioning

Define the number of versions you want to keep, preserving multiple iterations of a file for later use. At any moment, you can travel back in time to access a file's previous version, and you'll be prevented from losing any data, even if a file was inadvertently modified or erased.

#### Live Backup

Leverage continuous data protection (CDP) technology to automatically detect changes to files and back them up onto the storage device without user intervention. You won't need to worry about manually backing up data or scheduling it; Echo backup software will take care of it for you 24/7.

#### Custom Configuration

Filter by file extension, date, or size. With numerous configuration options, Echo backup software provides a flexible tool that allows you to easily choose the data you wish to backup.

#### Cross-Platform Support

Your data is seamlessly available whether you are using a Mac® or a PC system. Echo backup software delivers the same powerful backup features and ease of use on both platforms for a consistent experience.

### System Requirements

#### Operating Systems:

- Windows® XP (Service Pack 2 is recommended)
- Windows Vista®
- Windows 7
- Mac OSX 10.5.x
- Mac OSX 10.6.x

#### Internet Browser Software:

- Internet Explorer® (version 5.0 and higher) or Mozilla® Firefox® version 1.0 and higher

#### Hardware:

- Available USB port
- Echo backup drive

## CREATE A BACKUP PLAN

### 1 Select your language and accept the license agreement

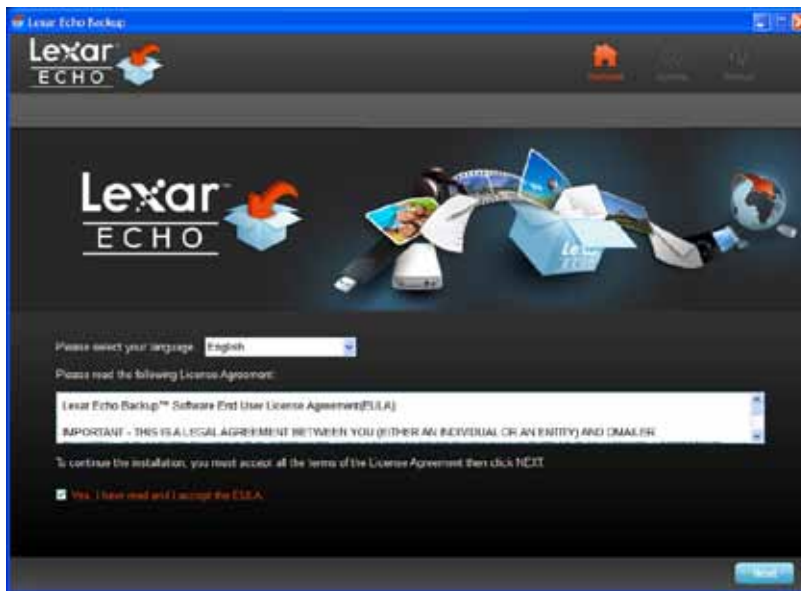


Figure 1

1. Select your language. Lexar Echo backup software is available in 18 languages (English, French, German, Italian, Spanish, Portuguese, Swedish, Danish, Norwegian, Dutch, Russian, Czech, Polish, Turkish, Korean, Japanese, Traditional, and Simplified Chinese).
2. Read the End User License Agreement (EULA) and accept by clicking on the "Yes, I have read and I accept the EULA" checkbox (see Figure 1). Click the "Next" button to continue.

### 2 Create a new backup plan



Figure 2

1. Select encrypted or non-encrypted for your backup plan. An encrypted plan provides automatic 128-bit AES encryption of data as it is being backed up.
2. Enter a profile name. For an encrypted plan, enter and confirm the password. Enter a hint to help with remembering the password.
3. Click the checkbox to install Backup Manager to enable automatic and continuous backups whenever the Echo drive is connected to the computer.
4. Click the "Next" button to continue.

**NOTE:** The first backup plan created is the default profile. This can be changed by going to Backup Manager under Drive Backup Settings (see Figure 5) and selecting another profile using the drop-down menu. You can select one default profile for every computer you back up, allowing simple automated backup of multiple computers with the same Echo drive.

Backup Manager can be uninstalled at any time through the Windows Start Menu (Programs>Lexar Echo Backup Manager>Uninstall). On Mac computers, use Spotlight to locate "Lexar Echo Backup Manager", then click on "Reveal in Finder" and delete the files you see.

### 3 Select files to backup

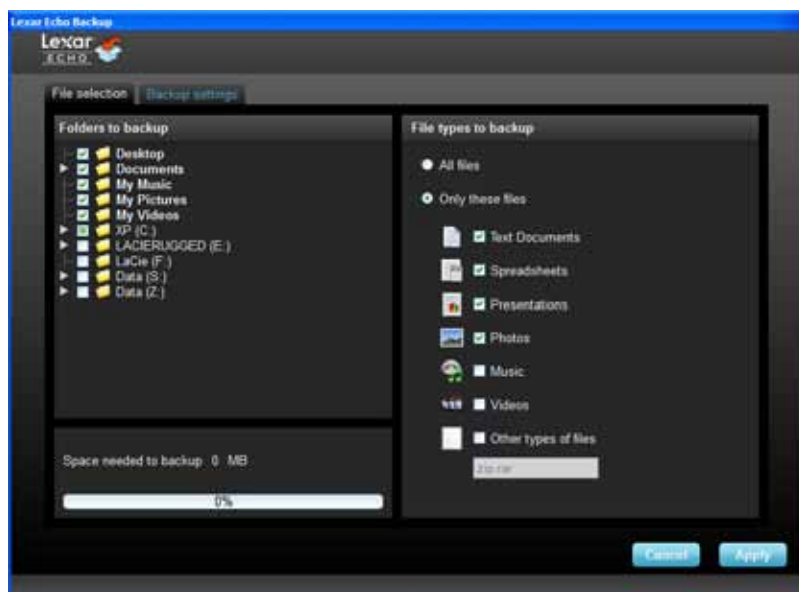


Figure 3

By default, all text documents, spreadsheets, presentations, and photos from the "My Documents" or "Documents" folder are selected for backup. If no changes are needed, click "Apply" to start the first backup.

To change the file selections, use the following options:

**File Selection:**

Select the folders and file types to backup (see Figure 3).

**Backup Settings:**

Provides granular control on the backup plan (see Figure 4).

## Main Options

- Start backup automatically—Backup starts when the software runs
- Live backup—Detect and automatically back up file changes without any user intervention
- Number of versions to keep—Select the number of versions of the same file to back up

## Backup Manager

- Default profile—Assign a default profile. This is the backup that will be launched automatically each time the Echo drive is connected to the computer.

## Filter By Date

Echo backup software offers two different types of date filters.

- Back up files from the last—Back up files created or modified in the selected period of time
- Back up files starting from—Back up files created or modified starting from the selected date

## Filter By Size

- Back up files smaller than—Set the size limit of the files to backup

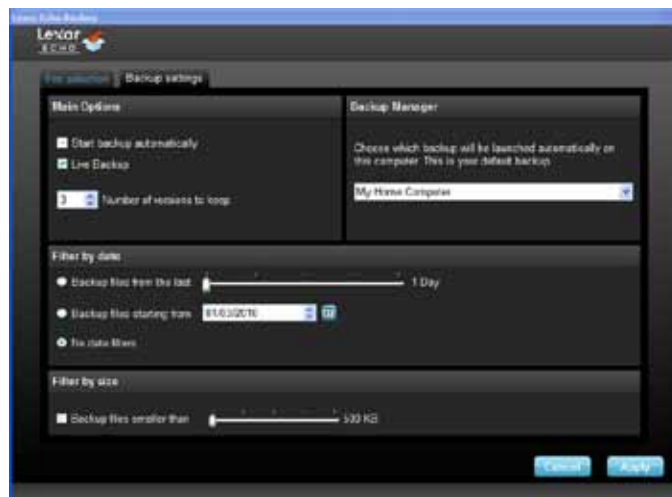


Figure 4



Figure 5

**NOTE:** Lexar Echo backup software includes an option to back up data online. The Echo backup drive comes with a free, 2GB account offered by Dmailer online.

To learn more about the online backup, click “Learn More” (see Figure 5).

#### 4 Start first backup

Click “Next” to start the first backup. The following screen appears showing the backup progress (see Figure 6):

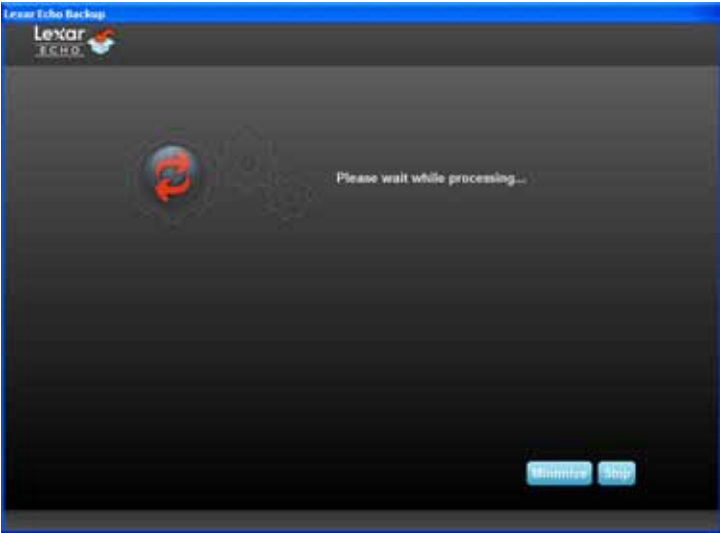


Figure 6

### MANAGE THE BACKUP

The Lexar Echo backup software main interface (see Figure 7) provides options to view, open, edit, and restore files that are backed up.

**NOTE:** The files can also be accessed manually from the root of the Echo drive in the “My Backup folder” if your profile is not encrypted.

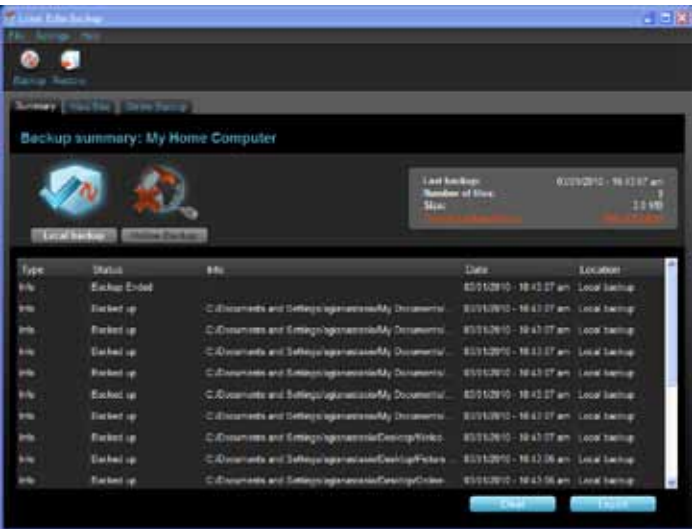
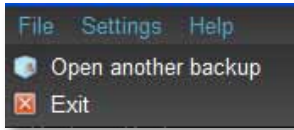


Figure 7

## 1 Main toolbar

These commands are available through the main toolbar.



- Files
  - Switch to another backup profile
  - Exit the application
- Settings
  - Access local backup settings
  - Access online backup settings
- Help
  - Access online support, FAQ and demos
  - Search for software update



- Backup button - Manually start the backup
- Restore button - Restore the backed up files to the designated location

## 2 Event log



Type	Date	Location	Status	Info
Document	16/09/09 23:50:48	Hard Drive (H:)	Backed up	123k
Document	16/09/09 23:50:48	Hard Drive (H:)	Backed up	123k
Document	16/09/09 23:50:48	Hard Drive (H:)	Backed up	123k
Document	16/09/09 23:50:48	Hard Drive (H:)	Backed up	123k
Document	16/09/09 23:50:48	Hard Drive (H:)	Backed up	123k
Document	16/09/09 23:50:48	Hard Drive (H:)	Backed up	123k
Document	16/09/09 23:50:48	Hard Drive (H:)	Backed up	123k
Document	16/09/09 23:50:48	Hard Drive (H:)	Backed up	123k
Document	16/09/09 23:50:48	Hard Drive (H:)	Backed up	123k

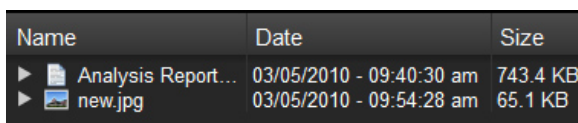
Figure 8

The Event Log is found in the Summary tab (see Figure 8). It logs every event that occurred during the backup process.

- Clear button—Clear the event log
- Export button—Export and save the event log to a \*.txt file

## 3 File versioning

To view the files that are backed up, click the View Files tab. A "+" sign appears before the file name if more than one version of the same file has been backed up (see Figure 9). Click the "+" sign to view the different versions of the file (see Figure 10).



Name	Date	Size
▶ Analysis Report...	03/05/2010 - 09:40:30 am	743.4 KB
▶ new.jpg	03/05/2010 - 09:54:28 am	65.1 KB

Figure 9

Name	Date	Size
▼ Analysis Report - ...	03/05/2010 - 09:40:30 am	743.4 KB
Analysis Repo...	03/05/2010 - 09:40:00 am	743.4 KB
Analysis Repo...	03/05/2010 - 09:25:28 am	743.3 KB
▼ new.jpg	03/05/2010 - 09:54:28 am	65.1 KB
new.jpg	03/05/2010 - 09:10:46 am	62.9 KB

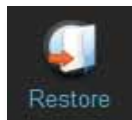
Figure 10

**NOTE:** To access a previous version of a file it must first be restored from the application.

#### 4 Restore files

To restore a file or folder, follow these steps:

1. Click the "View Files" tab.
2. Select the file or folder you want to restore. The selected file or folder will be highlighted.
3. Click the Restore button.



4. Select the location to where the file or folder is to be restored (see Figure 11).



Figure 11

5. Click OK.

**NOTE:** If the file or folder is restored to its original location, it will replace the copy on the computer.

## CONTACT INFORMATION

### **If you have questions, we are here to help**

Please send us your questions at [support@lexar.com](mailto:support@lexar.com)

### **Getting more information**

Product information: [www.lexar.com/echo](http://www.lexar.com/echo)

Customer support and warranty information: [www.lexar.com/support](http://www.lexar.com/support)

### **Lexar Media, Inc.**

47300 Bayside Parkway

Fremont, CA 94538

Tel: (510) 413-1275

Email: [support@lexar.com](mailto:support@lexar.com)

URL: [www.lexar.com](http://www.lexar.com)

7 a.m. to 5 p.m. PST, Monday through Friday