

Setting up a private vault using ENC DataVault lite in Windows

How do I setup my private vault in Windows?

Setting up your private vault is simple! Just follow the below steps:

STEP 1 - ENC DataVault lite for PC and save the file directly to your Sony external SSD

STEP 2 - Setting up your private vault

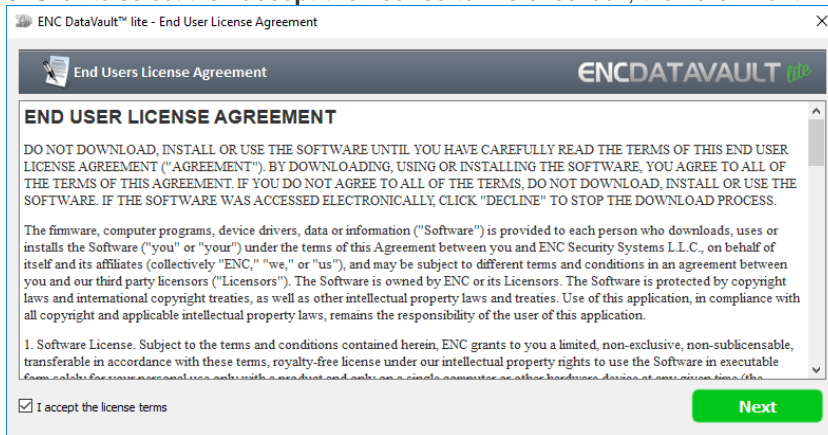
1. Double-click on **ENCDDataVaultlite.exe** to run the installation.

Name

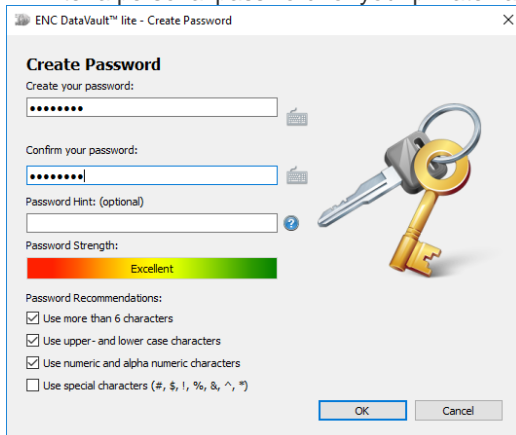
ENCDDataVault_lite.exe

2. Click **Next** on the Welcome screen.

3. Click to select the **I accept the license terms** checkbox, then click **Next**.



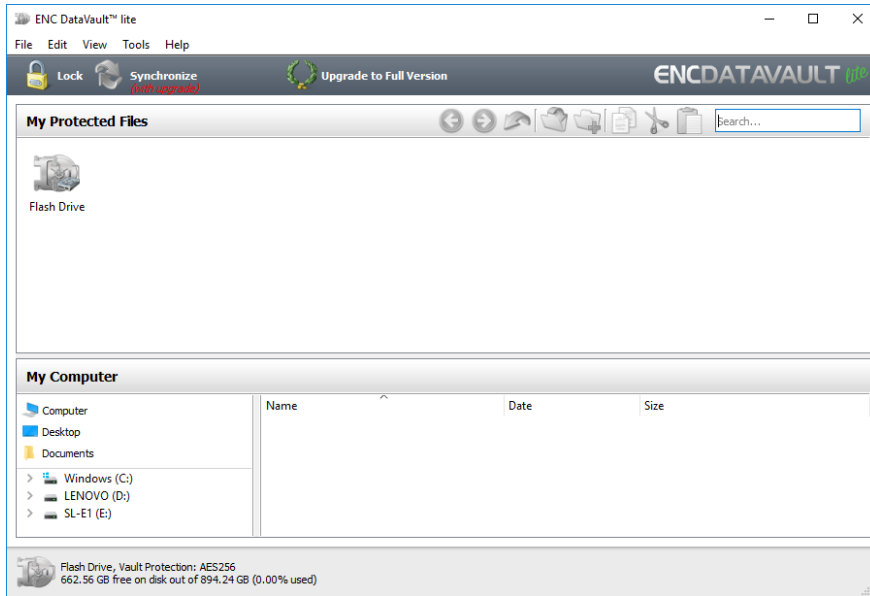
4. Enter a personal password for your private vault.



NOTE: You can use the Password Recommendation Checkboxes to reduce or increase the strength of your password

5. Click **OK**.

6. Open the Vault by clicking on the Vault icon.



7. The installation is complete. You are now ready to use the vault.

