

# Lexar™



Lexar DataSafe Software

Quick Start Guide for Windows

# Contents

- Introduction.....1
- Supported Operating Systems : .....1
- Required Hardware: .....1
- Getting Started.....1
- Installing and setting up a private safe using a Windows: .....1
- Installing your private safe:.....2
- Setting up your private safe: .....2
- How to add files or folders into your private safe: .....3
- How to backup your data:.....4
- Lost Flash Drive Data Recovery Procedure:.....4

## Introduction

Welcome to Lexar DataSafe! Lexar DataSafe is a fast, simple way to store and protect critical and sensitive files on any Lexar media drive. This software will allow you to create a private safe and simply drag-and-drop your valuable files inside. Access to your safe is protected by a personal password and your files are automatically encrypted. Even if your drive is lost or stolen, you will have peace of mind knowing your files are secure. When it comes to protecting your private files, you can trust Lexar DataSafe!

### Supported Operating Systems :

Windows® 7

Windows® 8

Windows® 10

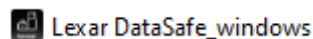
### Required Hardware:

Lexar USB Flash Drives

Lexar Portable Solid-State Drive

## Getting Started

After connecting your Lexar Flash Drive/Portable Solid State Drive to a computer, double-click the **Lexar DataSafe.exe** (executable) file to run the Lexar DataSafe software (Fig. 1). (Some computers may require you to open the computer directory to locate connected drive.)



(Fig. 1)

## Installing and setting up a private safe using a Windows:

Setting-up your private safe is simple! Follow the steps below to set up your private safe.

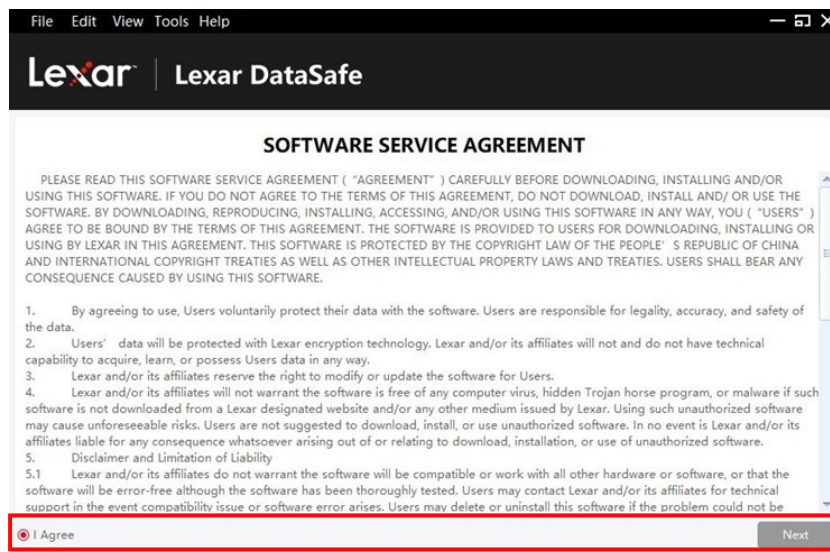
## Installing your private safe:

1. Double-click on “Lexar DataSafe” file to perform the installation

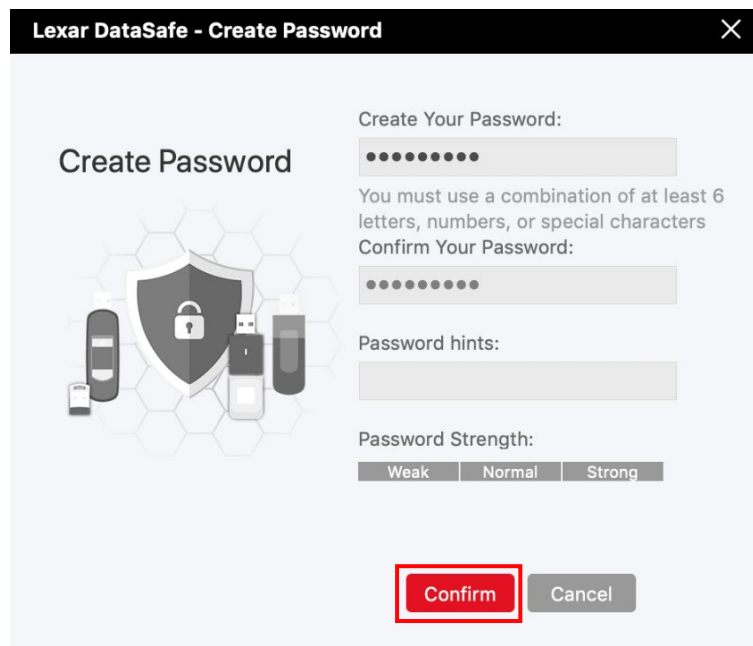
## Setting up your private safe:

Once your Lexar DataSafe is open, you will see the welcome screen, please read the software service agreement carefully. If you accept the service agreement, follow the steps below:

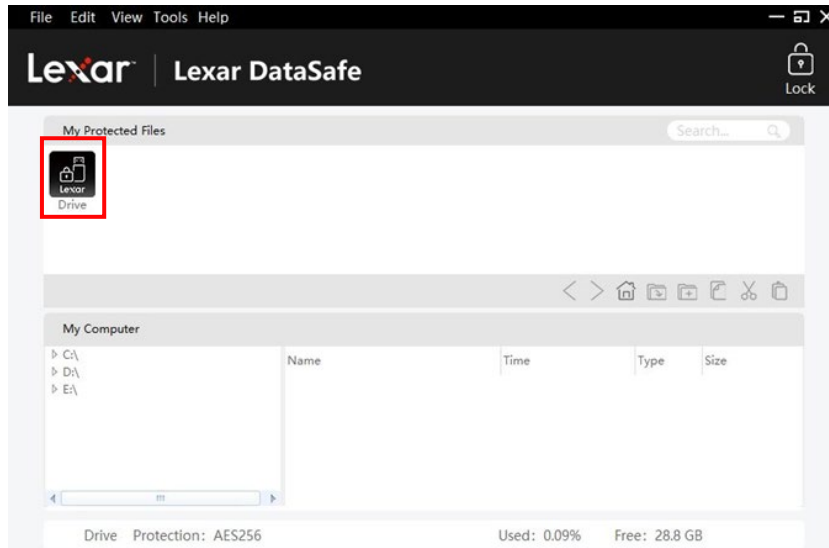
1. Click “I Agree” checkbox, then click **Next**



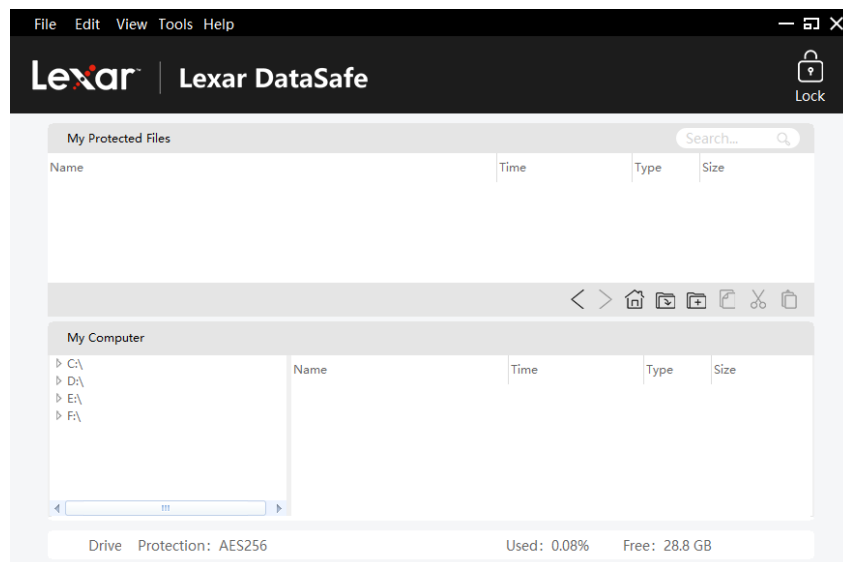
Create a personal password for your private safe. Your password must be at least 6 letters, numbers, or special characters. Enter a hint to help you remember your password, then click **Confirm**.



2. The installation is complete.
3. To access your safe, simply click on the DataSafe icon.

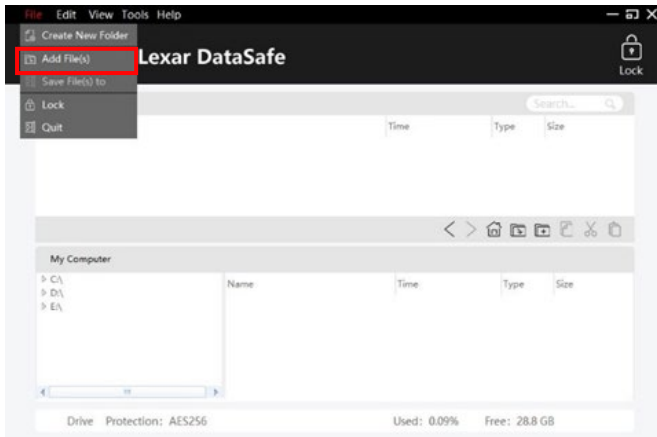


4. Lexar DataSafe is now ready to keep your valuable and sensitive files in your new private safe.

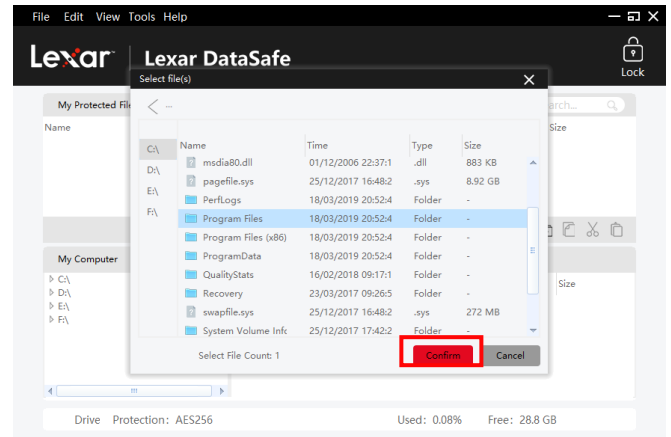


## How to add files or folders into your private safe:

Add files manually by clicking on the **Add File** icon from the DataSafe menu bar, and select the files you want to add (Fig. 5a and 5b). Or simply drag-and-drop them right into the "My Protected Files" main screen.



(Fig. 5a)



(Fig. 5b)

## How to backup your data:

It is very important that you perform regular backups of your data. We recommend you make backups of your data to your host computer before closing the application.

With the safe open, click on **Menu/Tools/Backup Data**

*Note: Regular backups are critically important. If your flash drive is ever lost or damaged, you can only restore and recover the data that you have previously backed up to your computer.*

## Lost Flash Drive Data Recovery Procedure:

If your contents are somehow corrupted, or your Lexar drive is damaged or lost, you can recover the data from your backup safe.

**To restore a safe** on an existing drive, follow the procedures below:

(for replacing a lost or damaged drive first Insert your Lexar branded drive in the USB port and then follow these steps):

- a. Click on Tools/Restore Data
- b. You will see "Restore Data" window open
- c. Click on "Select the safe to restore" and follow the instructions